

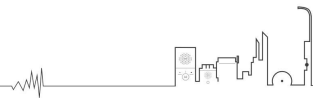
XC-9000 Centralized Management Software



Xc-9000 is an integration communication platform software independently researched and developed by SPON , which has better data processing ability and stable data communication. Xc-9000 integrates public broadcasting, video intercom, video conferencing, voice monitoring, information release and other functions of the communication platform, to provide secure, stable, advanced service support for industry solutions.

MAIN FUNCTIONS

1. B/S software architecture , unified management of all IP intercom & PA devices in one management software .
2. All critical system informations on "Dashboard" of user-friendly web interface.
3. Creat and schedule timed event 、 alarm event .etc , multiple combination of events can be customized .
4. Support multiple real-time bradcast task , include server sound card、 File、 Terminal、 speech synthesis.
5. Support user-defined call transfer 、 call answer、 call priority .
6. Support to upload audio file or pre-recorded voice messages to media library .
7. Support the management of the broadcasting system through the mobile APP.
8. Support call-log and event-log record and inquire .
9. Support user account management ,include account operation authority settings, and enabling and disabling user functions .
10. Support the Third-party VOIP phone access , to make integration with VOIP phone system by using SIP trunk.
11. Support to integrate with other system and provide standard HTTP API document for Third-party development .



INSTALLATION ENVIRONMENT

Operating System

Windows 7、Windows 10、Windows Server 2012 and above

CPU

Intel Core I5、I7、AMD

Memory(RAM)

DDR3 4GB and above

System Type

64-bit operating system

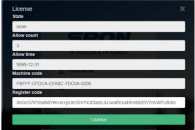
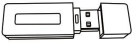
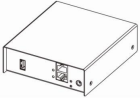
Hard Disk

SATA 120G SSD or 500G HDD

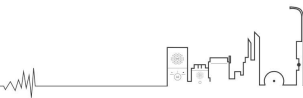
Sound Card

Stereo mixer

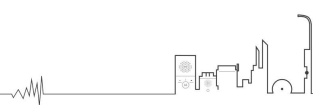
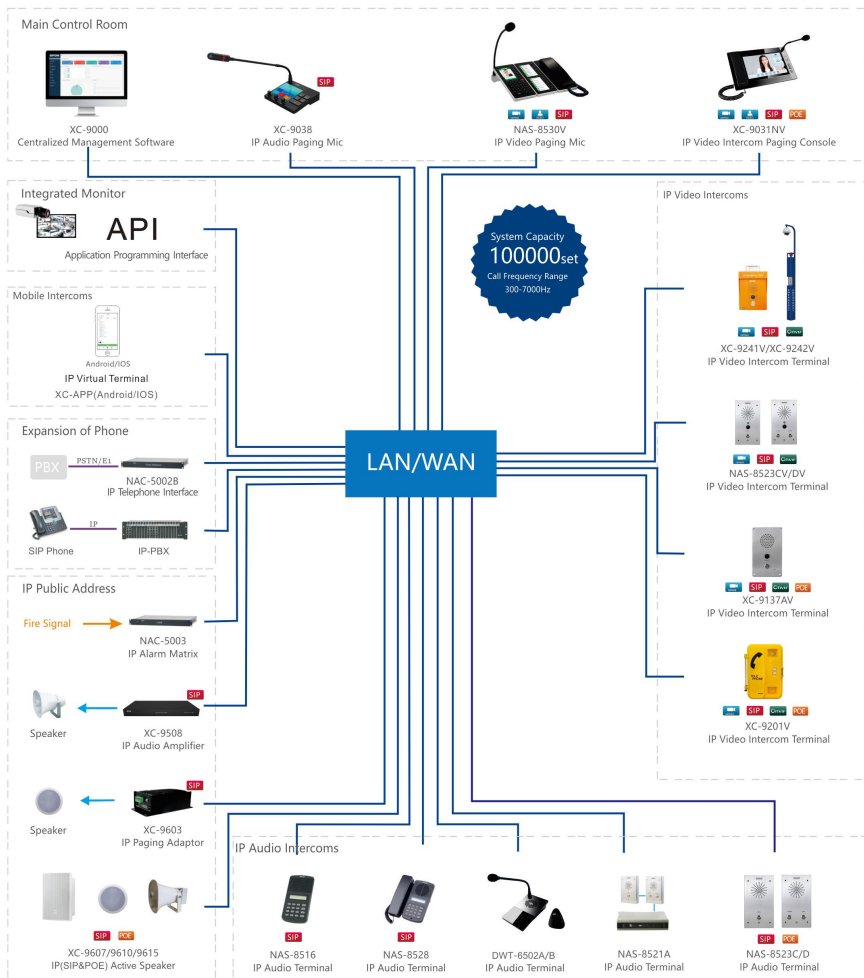
LICENSING SCHEME

	<p>Registration Version: Demo version Registration Type: License Registration Mode: Enter the license to the registration interface Registration Period: 2 months Application Environment: Unlimited</p>
	<p>Registration Version: Official version Registration Type: Pluggable USB Dongle Registration Mode: Plug into USB port of PC Registration Period: Permanent Application Environment: Windows PC</p>
	<p>Registration Version: Official version Registration Type: Accessible Remote Dongle Registration Mode: Access to network, set parameters to login to the XC-9000 software for register. Registration Period: Permanent Application Environment: Windows server, VMS, Cloud server</p>

Note: Demo version includes map module, scene module; Official version does not include. Demo version and official version only include 3 SIP device access and 3 APP access. If the official version needs to add map module, scene module, SIP/APP access quantity, please contact the manufacturer to purchase in advance.



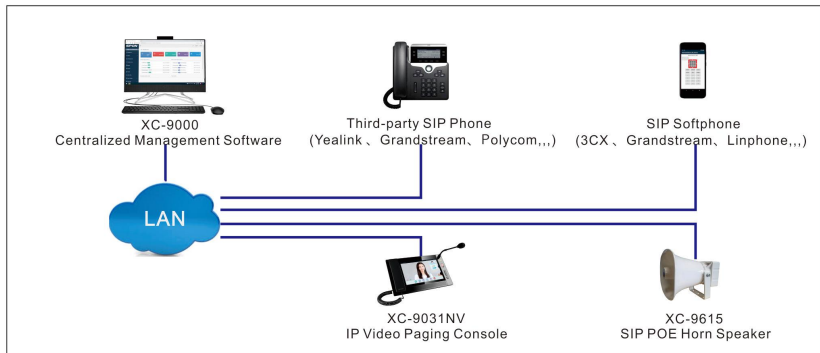
SYSTEM DIAGRAM



TYPICAL APPLICATION

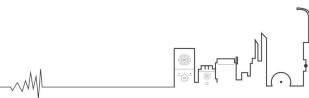
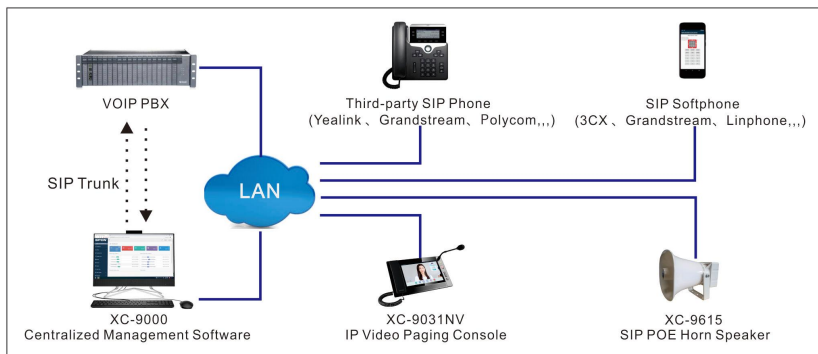
APPLICATION 1

The centralized management software XC-9000 support to integrate the third-rd party standard SIP phone or SIP softapp to realize real-time SIP voice paging announcement .Also the software XC-9000 support creat timed task 、 real-time task broadcast to the designated terminals or zones .



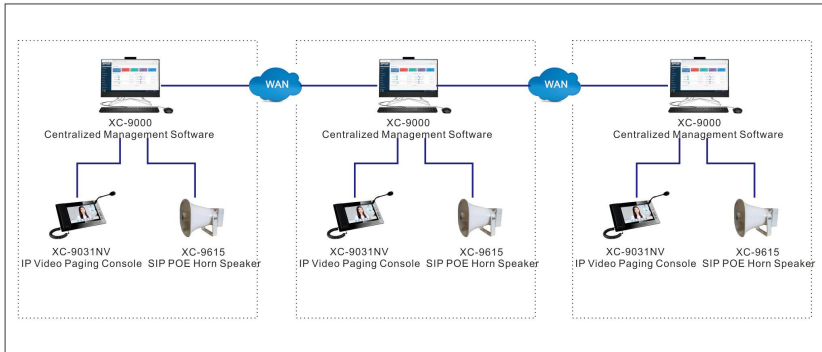
APPLICATION 2

The centralized management software XC-9000 support to make integration with thrid-party VOIP telephone system by using SIP Trunk , the SIP phone under the VOIP telephone system can make communication with SPON IP intercom and PA audio terminal .



APPLICATION 3

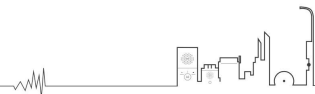
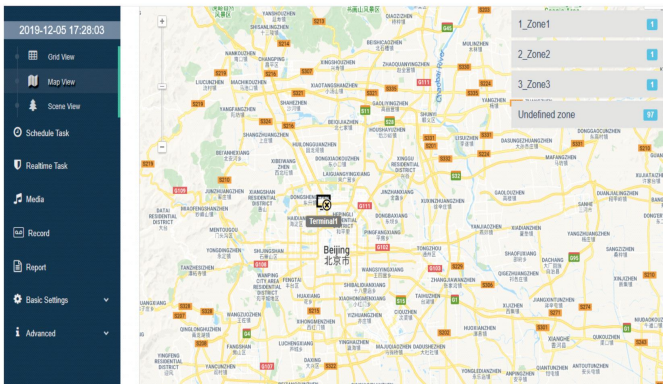
The Centralized management software XC-9000 support multiple server interconnection to expand the scale. The IP intercom or IP PA devices under the corresponding server can make intercommunication between each other. The system allows max 64 server interconnection to expand capacity to 64000 terminal.



EXPANDING MODULE APPLICATION

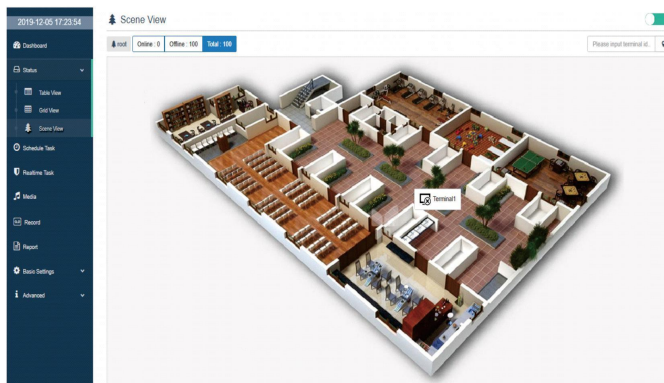
Electronic Map Module

The Centralized management software XC-9000 supports the function of electronic map, user can customize the terminal location on the map, and quickly realize the functions of intercom, broadcast, monitoring, etc.



Scene View Module

The Centralized management software XC-9000 supports scene views, which can import floor plans, structural drawings, 3D renderings, and customize terminal positions on the views to quickly implement intercom, broadcast, and monitoring functions.



Video View Module

The Centralized management software XC-9000 supports video view , user can binding the external IP camera with IP intercom device ,when the intercom device call to central microphone , the video of IP camera will pop-up on the software XC-9000 interface ; Also can view the real-time video of IP camera on the module.

